



CUTTING-EDGE SUSTAINABLE TANNING WITH SUCCUIR

SUCCUIR, THE ALL NEW TRIOSE-BASED WET-WHITE TANNING SYSTEM FROM SCHILL+SEILACHER WILL SUPPORT YOU TO MANUFACTURE BIODEGRADABLE LEATHERS WITH LOW ENVIRONMENTAL IMPACT WHILE FULFILLING HIGH PERFORMANCE STANDARDS.

A waste product from biodiesel manufacturing using simplified chemical manufacturing SUCCUIR is a unique 100 % biogenic heavy-metal-free tanning technology.

The chemical nature of SUCCUIR presents the perfect basis for leathers of high biodegradability making them benign by design.

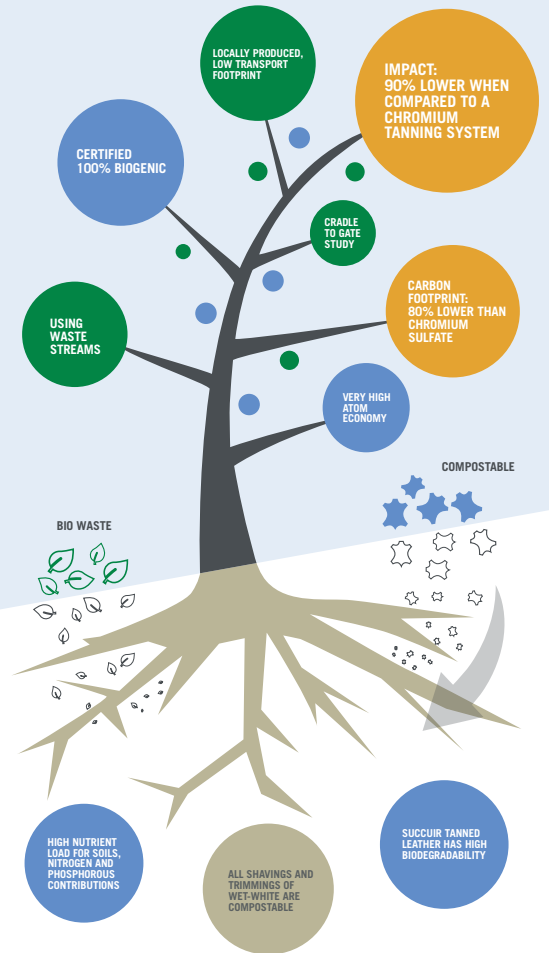
SUCCUIR PRE-TANNING AGENT

Area of use	Product name	Short description	Application
PRE-TANNING TANNING RE-TANNING	SUCCUIR	Triose-based heavy-metal free pre-tanning agent for wet-white, made from renewable resources	SUCCUIR is a pre-tanning agent for all types of leather to produce a chrome-free pre-tanned stock which can be easily shaved to the required substance

REDUCE IMPACT OF TANNING ON CLIMATE CHANGE

Reducing the impact of tanning on climate change contributes to a modern world of circular bioeconomy.

The application of SUCCUIR is designed to be as easy as possible. Compared to existing wet-white technologies the tanning with SUCCUIR does not require any significant changes in the production operation. Leathers pre-tanned with SUCCUIR can be processed to a wide range of leather articles. The shavings and cuttings are free of hazardous substances and can be recycled as fertilizer, disposed of or composted.



EASY TO USE

Product Details

- Oxidation products of polyhdric alcohols
- Appearance: Yellowish, clear-turbid liquid
- Active substance: 40 % - 50 %
- pH (10 % aqueous solution): 2.0 - 4.0
- Offer: 6 % - 8 % SUCCUIR

Benefits:

- Low environmental impact
- Low CO₂ emission
- 100 % biogenic
- Not in conflict with food production
- Simplified production
- Transparent raw material supply
- Easy to use
- Suitable for unsplit material
- Heavy-metal-free
- Glutaraldehyde-free
- High biodegradability of effluent ingredients
- High biodegradability of leather
- Reduces problematic waste

Manufacturing Procedure:

Process	%	Product	°C	Min	pH / Remarks
	30	Water	30		
	5	Salt			
	0.2	Lipsol SQS		15	
	0.8	Formic Acid		30	
	0.3	Sulphuric Acid		30	pH ca. 4 - 4.5
	8	SUCCUIR		120	
	1	Sodium Bicarbonate		60	2x30'
	0.8	Sodium Bicarbonate	40	120	2x30'+60', pH>6
Drain					
	100	Water	25	15	
Drain					
	30	Water	25	90	
	0.5	Syantn / Vegetable Tanning			

Lime split, delimed pelt / substance: 3.5 - 4.0 mm

For more information please contact:

Schill+Seilacher GmbH
 Schönaicher Strasse 205
 71032 Böblingen (Germany)
 Phone: + 49 7031 282-0
 E-Mail: leather@schillseilacher.de

